

Pro/ENGINEER

6

5

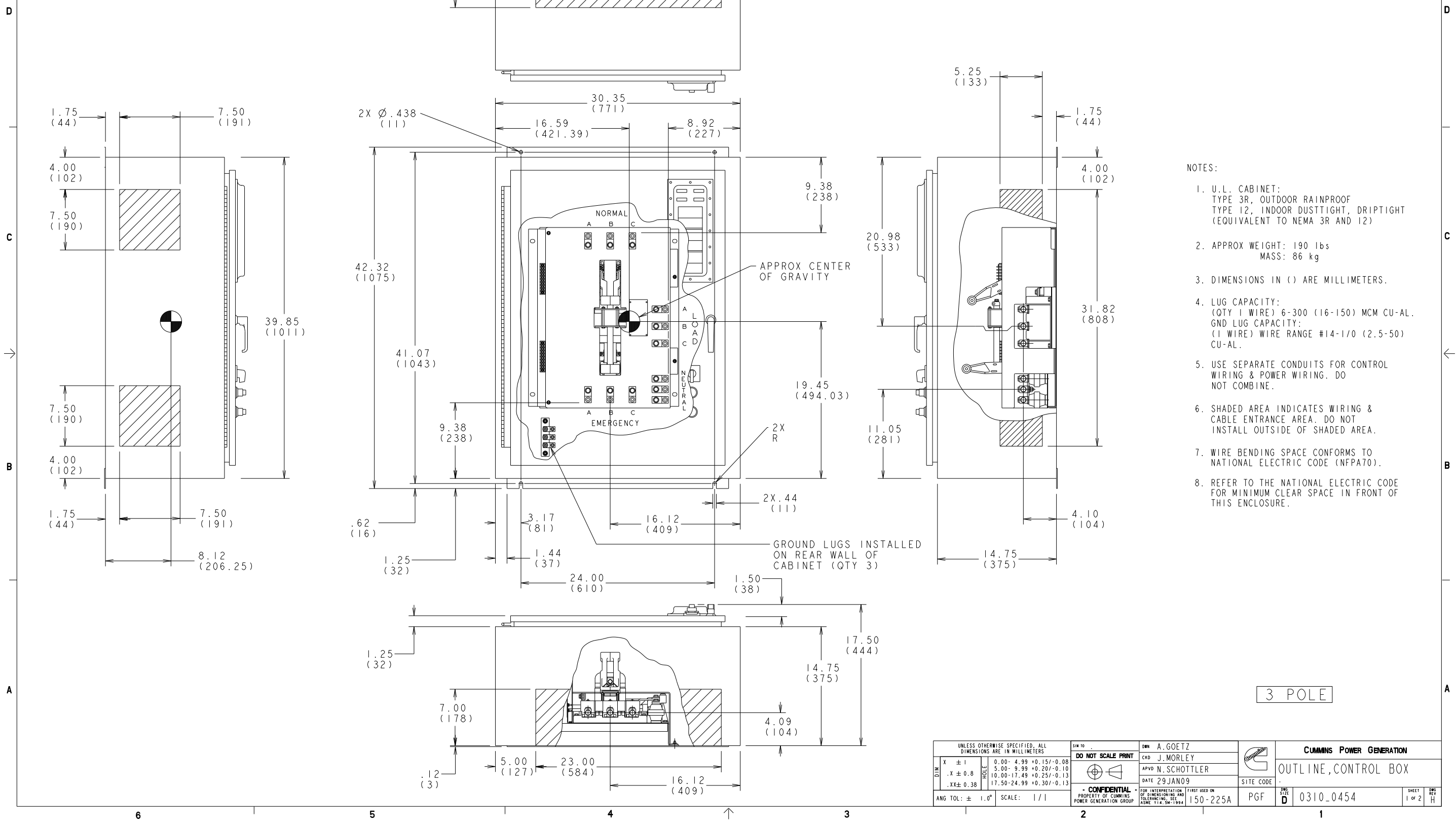
4

3

2

1

REL NO	LTR	NO	REVISION	DRN	CRD	APVD	DATE
ECO-103287	H	1	REDRAWN IN PRO/E; REVISED NOTES PER ECO	AWG	JM	SCHOTTTLER	29 JAN09



- NOTES:
- U.L. CABINET: TYPE 3R, OUTDOOR RAINPROOF; TYPE 12, INDOOR DUSTTIGHT, DRIPTIGHT (EQUIVALENT TO NEMA 3R AND 12)
  - APPROX WEIGHT: 190 lbs; MASS: 86 kg
  - DIMENSIONS IN ( ) ARE MILLIMETERS.
  - LUG CAPACITY: (QTY 1 WIRE) 6-300 (16-150) MCM CU-AL. GND LUG CAPACITY: (1 WIRE) WIRE RANGE #14-1/0 (2.5-50) CU-AL.
  - USE SEPARATE CONDUITS FOR CONTROL WIRING & POWER WIRING. DO NOT COMBINE.
  - SHADED AREA INDICATES WIRING & CABLE ENTRANCE AREA. DO NOT INSTALL OUTSIDE OF SHADED AREA.
  - WIRE BENDING SPACE CONFORMS TO NATIONAL ELECTRIC CODE (NFPA70).
  - REFER TO THE NATIONAL ELECTRIC CODE FOR MINIMUM CLEAR SPACE IN FRONT OF THIS ENCLOSURE.

3 POLE

UNLESS OTHERWISE SPECIFIED, ALL DIMENSIONS ARE IN MILLIMETERS		SIM TO		DRN A. GOETZ		CUMMINS POWER GENERATION	
DO NOT SCALE PRINT		CRD J. MORLEY		APVD N. SCHOTTTLER		OUTLINE, CONTROL BOX	
DATE 29 JAN09		SITE CODE		PGF		0310-0454	
ANG TOL: ± 1.0°		SCALE: 1/1		FIRST USED ON 150-225A		SHEET 1 OF 2	

Pro/ENGINEER

6

5

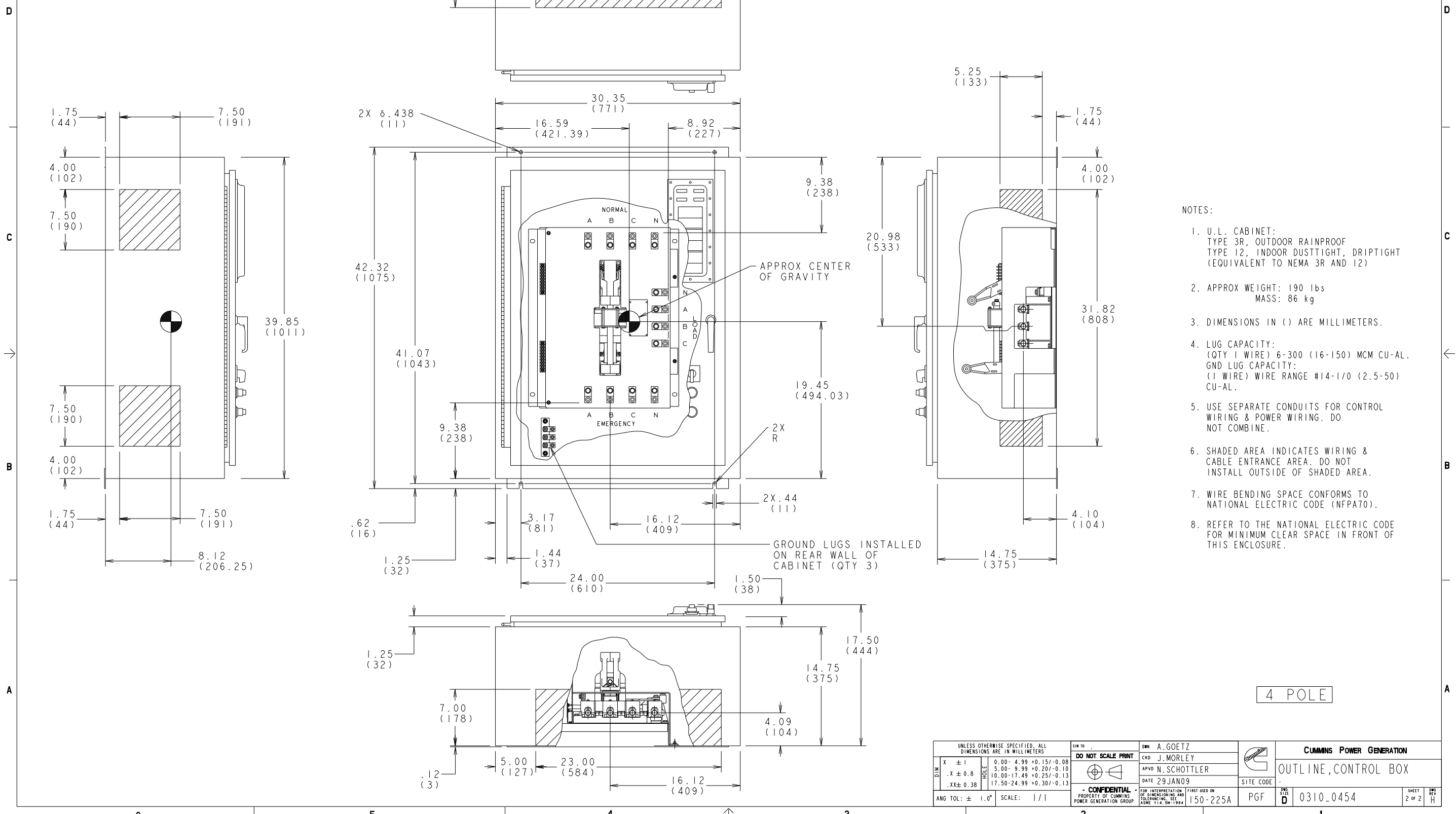
4

3

2

1

REL NO	LTR	NO	REVISION	DNW	CRD	APVD	DATE
ECO-103287	H	1	REDRAWN IN PRO/E; REVISED NOTES PER EDWG	JM	SCHOTTTLER		29 JAN 09



- NOTES:
- U.L. CABINET: TYPE 3R, OUTDOOR RAINPROOF TYPE 12, INDOOR DUSTTIGHT, DRIPTIGHT (EQUIVALENT TO NEMA 3R AND 12)
  - APPROX WEIGHT: 190 lbs MASS: 86 kg
  - DIMENSIONS IN ( ) ARE MILLIMETERS.
  - LUG CAPACITY: (QTY 1 WIRE) 6-300 (16-150) MCM CU-AL. GND LUG CAPACITY: (1 WIRE) WIRE RANGE #14-1/0 (2.5-50) CU-AL.
  - USE SEPARATE CONDUITS FOR CONTROL WIRING & POWER WIRING. DO NOT COMBINE.
  - SHADED AREA INDICATES WIRING & CABLE ENTRANCE AREA. DO NOT INSTALL OUTSIDE OF SHADED AREA.
  - WIRE BENDING SPACE CONFORMS TO NATIONAL ELECTRIC CODE (NFPA70).
  - REFER TO THE NATIONAL ELECTRIC CODE FOR MINIMUM CLEAR SPACE IN FRONT OF THIS ENCLOSURE.

4 POLE

UNLESS OTHERWISE SPECIFIED, ALL DIMENSIONS ARE IN MILLIMETERS		SIM TO		DNW A. GOETZ		CUMMINS POWER GENERATION	
X ± 1	0.00- 4.99 +0.15/-0.08	DO NOT SCALE PRINT		CRD J. MORLEY		OUTLINE, CONTROL BOX	
.X ± 0.8	5.00- 9.99 +0.20/-0.10			APVD N. SCHOTTTLER			
.XX ± 0.38	10.00-17.49 +0.25/-0.13			DATE 29 JAN 09		SITE CODE	
	17.50-24.99 +0.30/-0.13			PROPERTY OF CUMMINS POWER GENERATION GROUP		PGF	
ANG TOL: ± 1.0°	SCALE: 1/1			FOR INTERPRETATION OF DIMENSIONS AND TOLERANCING, SEE ASME Y14.5M-1994		FIRST USED ON 150-225A	
				SHEET 2 OF 2		D 0310_0454	

**Part A004Y414 H**

Description	Legacy Name	External Regulations	Application Status	Release Phase Code	Security Classification	Alternates
OUTLINE,CONTROL BOX	0310-0454	None	Production Only	Production	Proprietary	

---

**Part Specifications :A004Y414 H**

Name	Description	Legacy Name
A012T897	DRAWING,INSTALLATION	0310-0454